



Japanese Bird Art, 1950 to present day

Part 4
Lithographic
prints
by 86 artists

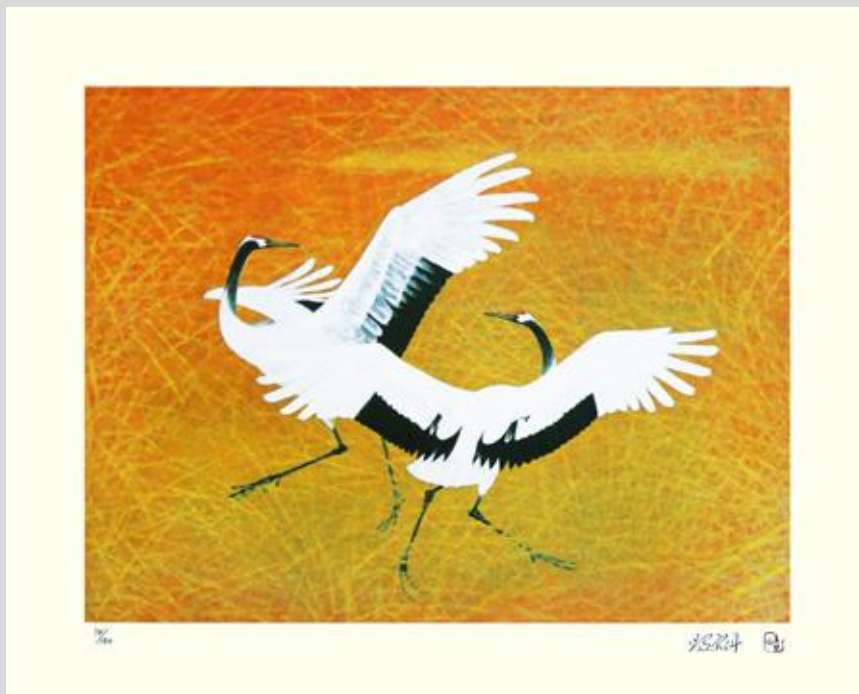
Introduction

Lithographic printmaking was invented in Germany in the late 18th century. To make a lithographic print (also called lithograph) the design was first drawn on the surface of a smooth slab of stone using a greasy substance that would readily absorb ink. Ink was then added and a piece of paper was placed on top of the inked surface. Finally, pressure was applied using a mechanical press to transfer the ink to paper. To make a multi-colored print this process was repeated using a different stone slab for each ink color.

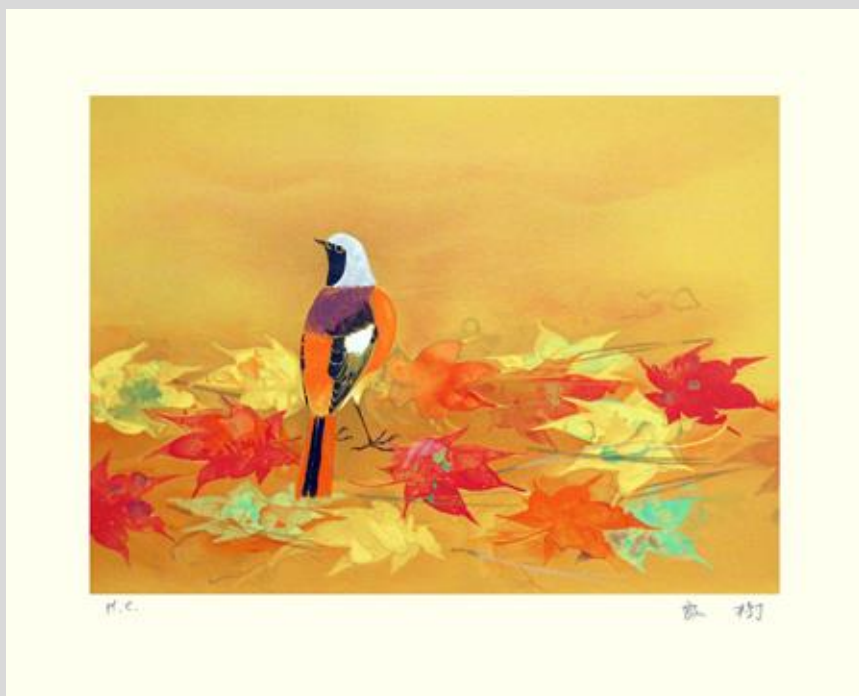
In Japan, lithography was first used in the late 19th century. Lithographic printing was more cost-effective than the traditional method of woodblock printing when a very large number of copies was required. After World War II Japanese artists also started to use lithography to make limited-edition art prints. From the 1950s to date about 125 Japanese artists have made limited-edition lithographs featuring birds (i.e., bird prints). Bird prints by 86 of these artists are part of the Reader Collection of Japanese Art and this virtual exhibition includes an example of the work of each of these artists. Some artists (prints 1-26) drew birds objectively (i.e., true-to-life shape and color) while others (prints 27-65) drew birds only semi-objectively. The remaining artists (prints 66-86) were more creative and totally ignored true-to-life details of a bird's shape and color.

For each of the 86 prints the following information is given: name of the bird depicted (when identifiable), name of the artist, print title (when titled) and print size.

1 Red-crowned crane
(*Grus japonensis*) by
Akio Watanabe, 550 x
440 mm



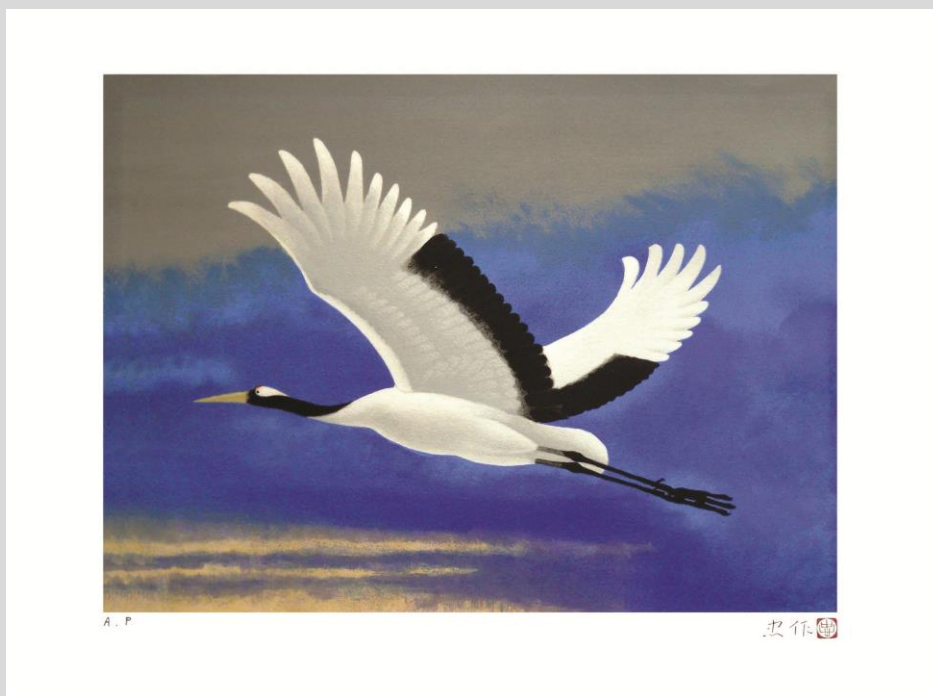
2 Daurian redstart
(*Phoenicurus aureus*)
by **Yoshiki Nonouchi**,
entitled bird, 420 x 340
mm



3 Great tit (*Parus major*) by **Atsushi Uemura**, entitled autumn field, 660 x 540 mm



4 Red-crowned crane (*Grus japonensis*) by **Chūsaku Ōyama**, 580 x 430 mm



5 Red-crowned crane (*Grus japonensis*) by **Otohiko Matsumura**, 570 x 430 mm



1/100

乙彦

6 Red-crowned crane (*Grus japonensis*) by **Akihisa Miwa**, 575 x 470 mm



1/100

暎久

7 Red-crowned crane (*Grus japonensis*) by **Katashi Oyama**, entitled blue flying, 680 x 460 mm



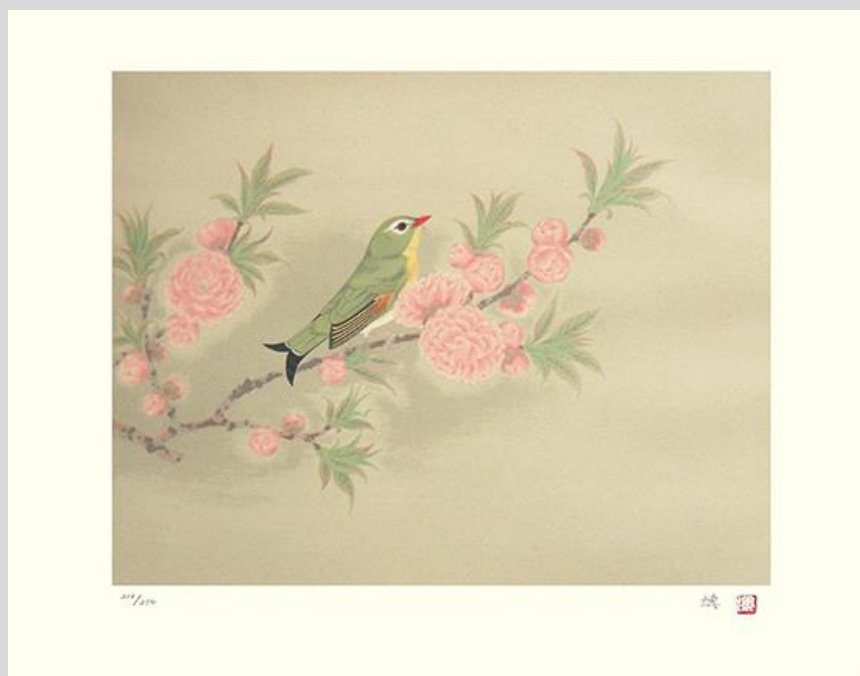
8 Whooper swan (*Cygnus cygnus*) by **Kiju Ikeda**, entitled Yatsugatake journey, 480 x 350 mm



9 Narcissus flycatcher (*Ficedula narcissina*) by **Mutsuo Kawashima**, 660 x 485 mm



10 Red-billed leiothrix (*Leiothrix lutea*) by **Hiroshi Takeyama**, 550 x 430 mm



11 Great tit (*Parus major*) by **Akira Nakanishi**,
entitled tits and berries, 330 x 505 mm



12 Albino Java sparrow (*Padda oryzivora*) by **Masami Iwata**, 495 x 655 mm



13 Japanese white-eye
(*Zosterops japonicus*) by **Masao
Kobayashi**, 570 x 490 mm



14 Gull (*Larus* sp.) by **Koji
Kinutani**, entitled seagull in
Venice, 570 x 450 mm



15 Cockatiel (*Nymphicus hollandicus*) by **Hideo Yoshihara**, entitled little bird, 320 x 450 mm



16 Red-crowned crane (*Grus japonensis*) by **Kunio Satō**, entitled white moon, 540 x 685 mm

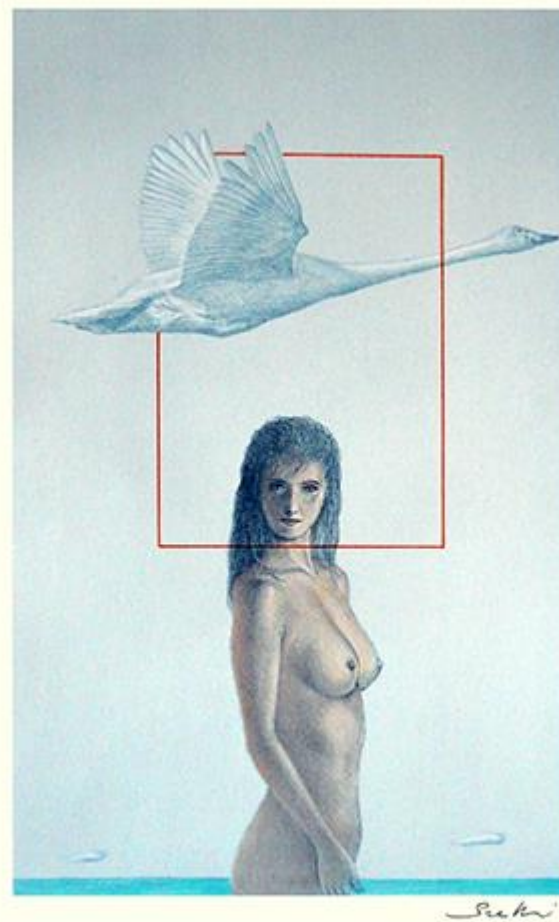


燾夫 印

17 Domestic fowl (*Gallus gallus*) by **Keiichi Kiyohara**, 465 x 550 mm



18 Swan (*Cygnus* sp.) by **Kaoru Sueki**, entitled light wind, 350 x 485 mm



19 Peafowl (*Pavo* sp.) by **Shigeru Izumi**, entitled peacock, 300 x 420 mm



20 Red-crowned crane (*Grus japonensis*) by **Meiji Hashimoto**, 480 x 600 mm



21 Red-crowned crane
(*Grus japonensis*) by
Taiji Hamada, 580 x 475
mm



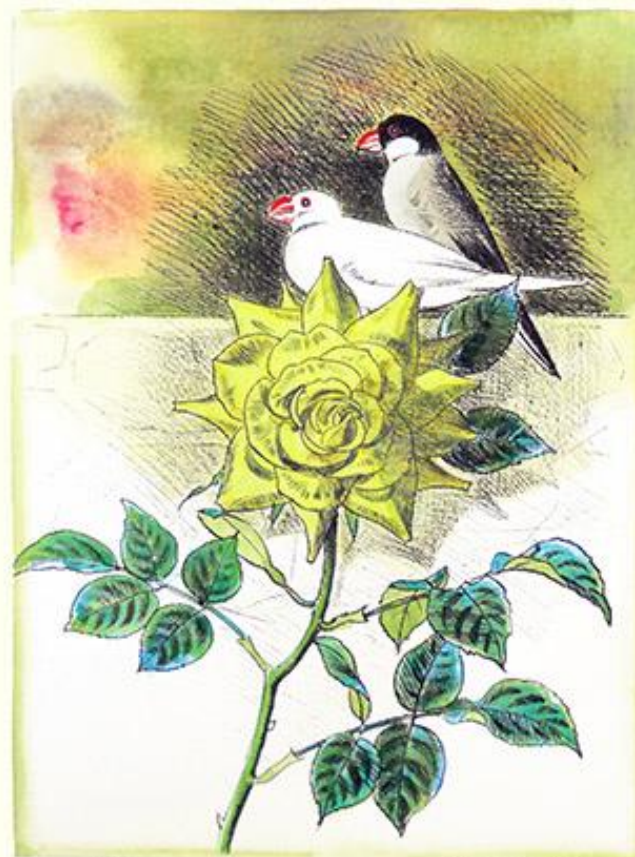
22 Oriental turtle-dove
(*Streptopelia orientalis*)
by **Junsaku Koizumi**,
entitled oriental turtle-
dove picture, 530 x 360
mm



23 Whooper swan (*Cygnus cygnus*) by **Takayoshi Nakayama**, entitled swan, 370 x 480 mm



24 Java sparrow (*Padda oryzivora*) by **Yoshio Itoda**, entitled Java sparrow and rose, 350 x 500 mm



25 Laughing kookabura (*Dacelo novaeguineae*) by **Masami Yamada**, entitled kookaburra in eucalyptus, 615 x 500 mm



26 Green peafowl (*Pavo muticus*) by **Sanrei Kodama**, entitled green peafowl, 655 x 500 mm



27 Red-crowned crane (*Grus japonensis*) by **Kazuho Hieda**, 540 x 635 mm



28 Cockatiel (*Nymphicus hollandicus*) by **Susumu Maki**, entitled luxuriant, 380 x 440 mm



65/120

三A 三

29 Siamese fireback pheasant (*Lophura diardi*), yellow-breasted magpie (*Cissa hypoleuca*) and Ryūkyū robin (*Erithacus komadori*) by **Shōkō Uemura**, entitled pheasant beneath the trees, 630 x 455 mm



30 Red-crowned crane (*Grus japonensis*) by **Tatsuoki Ichino**, entitled paired cranes, 535 x 405 mm



31 Domestic fowl (*Gallus gallus*) by **Naondo Nakamura**,
565 x 765 mm



32 Domestic fowl (*Gallus gallus*) by **Kazumi Amano**,
270 x 390 mm



Kazumi Amano, 1980

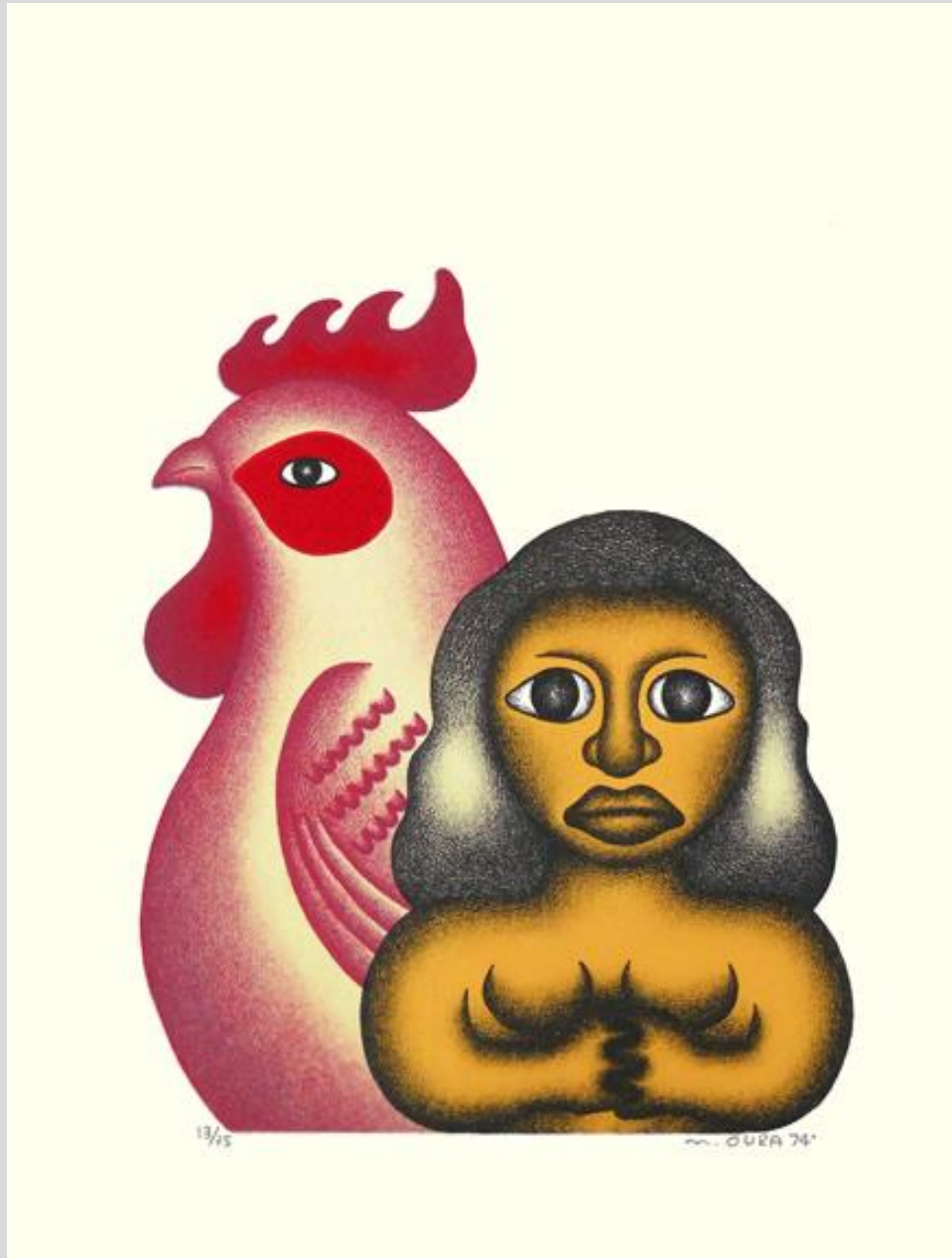
33 Red-crowned crane
(*Grus japonensis*) by
Mirei Kodama, entitled
crane month, 660 x 500
mm



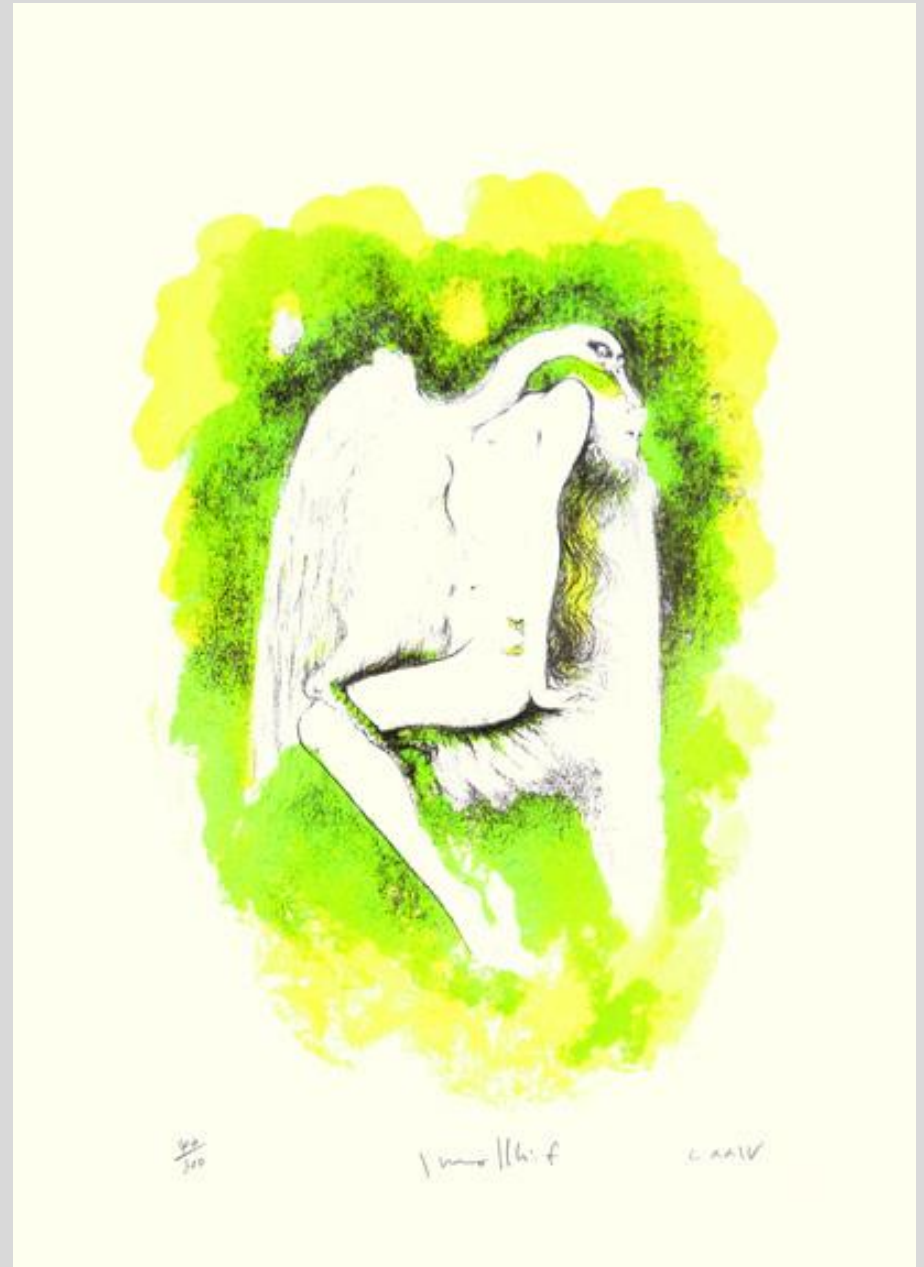
34 Golden eagle
(*Aquila chrysaetos*) by
Kunitarō Suda, 530 x
450 mm



35 Domestic fowl (*Gallus gallus*) by **Nobuyuki Ōura**, 390 x 515 mm



36 Swan (*Cygnus* sp.) by **Iwami Furusawa**, entitled LXXIV, 455 x 635 mm



37 Bohemian waxwing (*Bombycilla garrulus*) by **C. Miyasaka**, 345 x 500 mm



38 Albino Java sparrow (*Padda oryzivora*) by **Hiroko Ojihara**, entitled spring white, 350 x 455 mm



39 Rock dove (*Columba livia*) by **Wasaburō Itozono**, 435 x 520 mm



116/116

Wasaburō Itozono

40 Great tit (*Parus major*) by **Kumiko Kita**, entitled lily, 380 x 505 mm



116/116

Kumiko Kita

41 White-naped crane (*Grus vipio*) by **Yasuo Kazuki**,
460 x 610 mm



1/10

Y. Kazuki

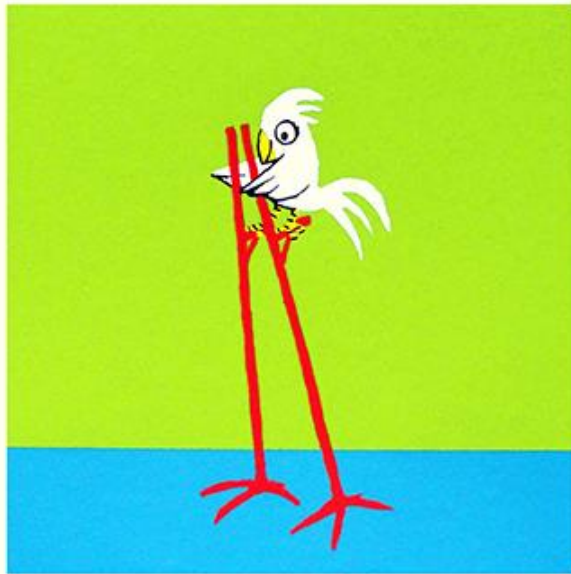
42 Scops owl (*Otus* sp.) by **Tatsuhiro Kaneda**, entitled
owl, 440 x 560 mm



1/10

T. Kaneda '77

43 Cockatoo (*Cacatua* sp.) by **Hiroshi Tada**, 360 x 360 mm



37/100

HIROSHI TADA

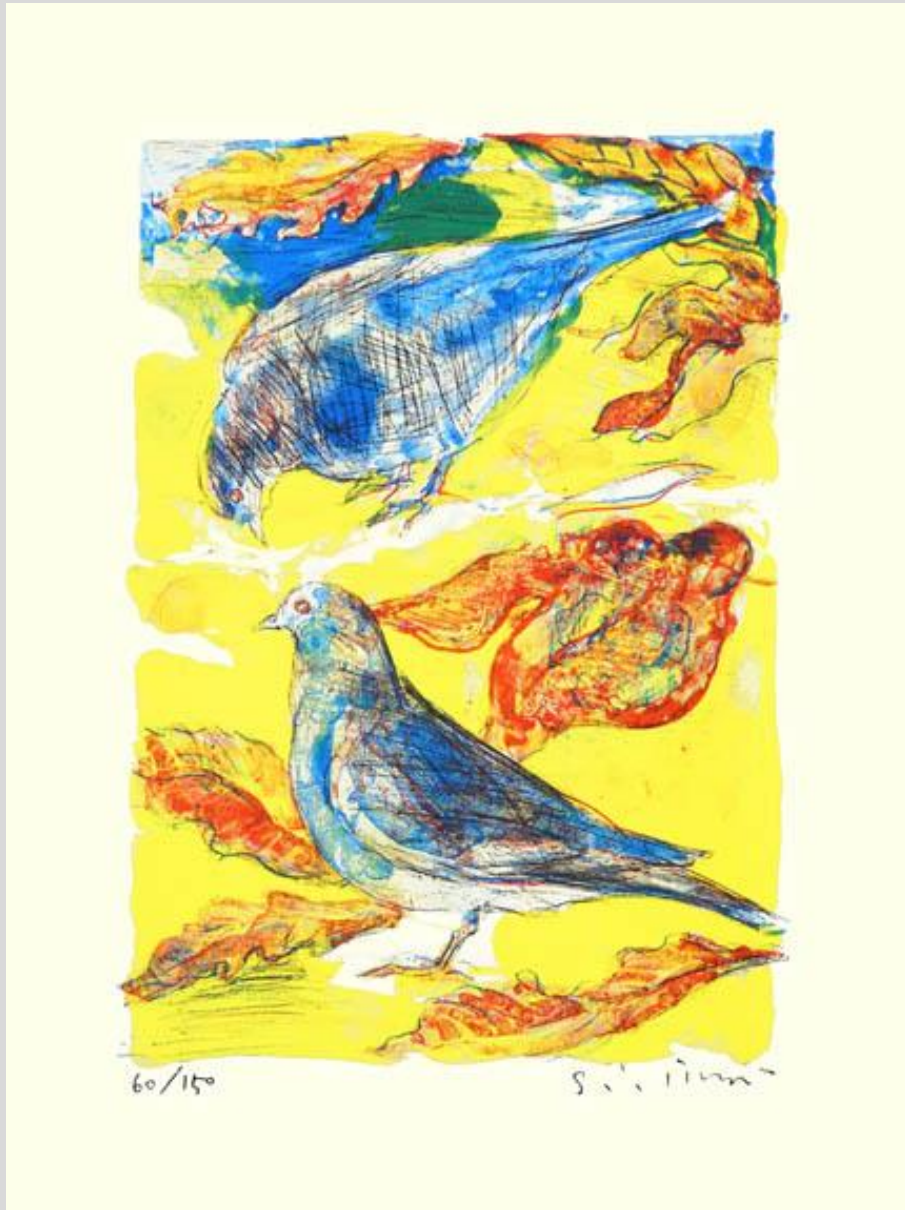
44 Japanese robin (*Erithacus akahige*) by **Hideo Kawahara**, 500 x 650 mm



1/100

Hideo Kawahara 1972

45 Rock dove (*Columba livia*) by **Shingo Imai**, entitled birds and autumn leaves, 270 x 360 mm



46 Great tit (*Parus major*) and brambling (*Fringilla montifringilla*) by **Chōsei Miwa**, entitled bird, 430 x 600 mm



47 Rock dove (*Columba livia*)
by **Yoshitatsu Yanagihara**,
entitled dove 3, 575 x440 mm



48 Rock dove (*Columba livia*)
by **Masataka Ōyabu**, 460 x 330
mm



49 Scops owl (*Otus* sp.) by **Yoshiaki Kuwata**, entitled in peace No. 2, 275 x 395 mm



50 Budgerigar (*Melopsittacus undulatus*) by **Wasaburō Hattori**, 325 x 445 mm



51 Eurasian tree sparrow (*Passer montanus*) by **Makoto Fukawa**, entitled two birds, 230 x 250 mm



102/680

2007

M. Fukawa

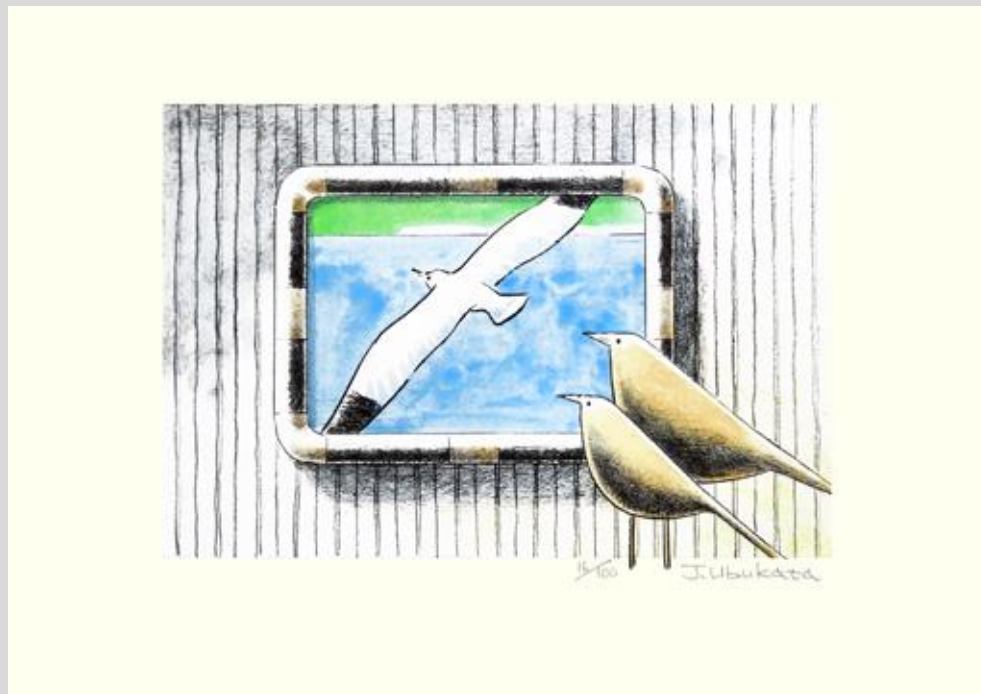
52 Ural owl (*Strix uralensis*) by **Akio Watanabe**, entitled it has also, 270 x 270 mm



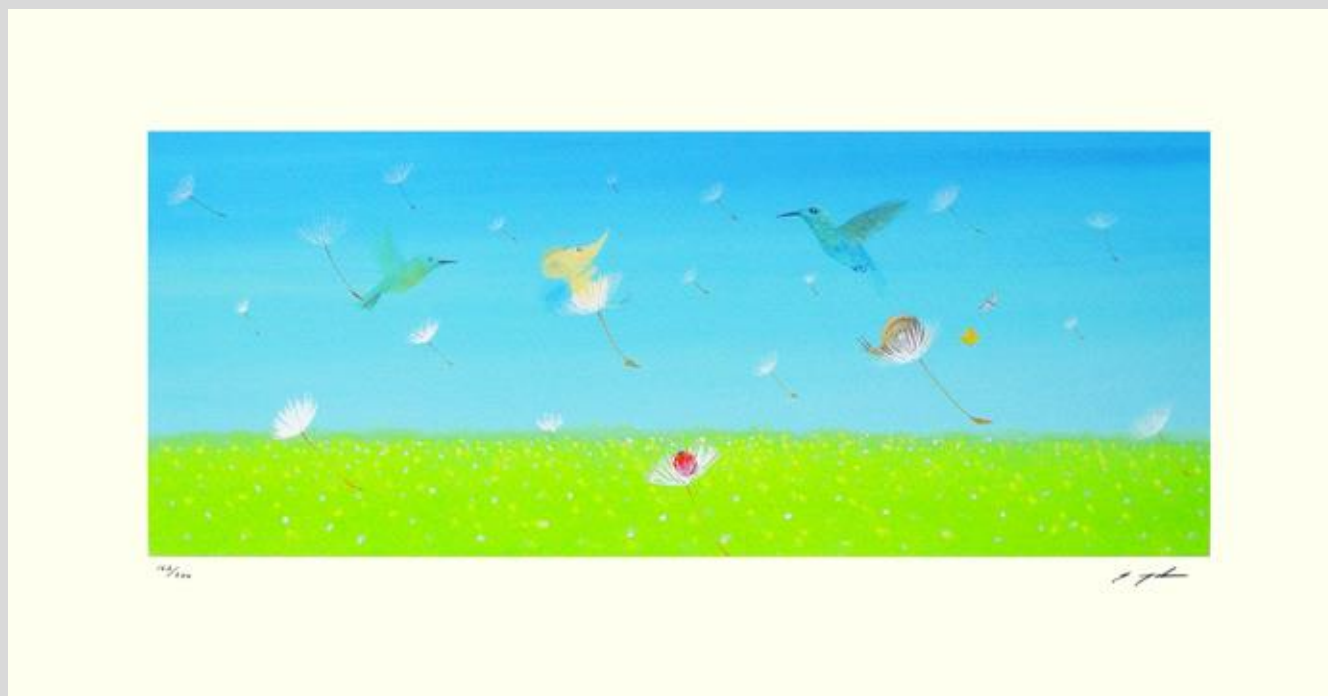
489/5000

Akio. w

53 Gull (*Larus* sp.) by
Jun'ichi Ubukata, 505 x
350 mm



54 Hummingbird
(Family Trochilidae) by
Shōmei Yoh, entitled
the elephant's dream
garden, 500 x 260 mm



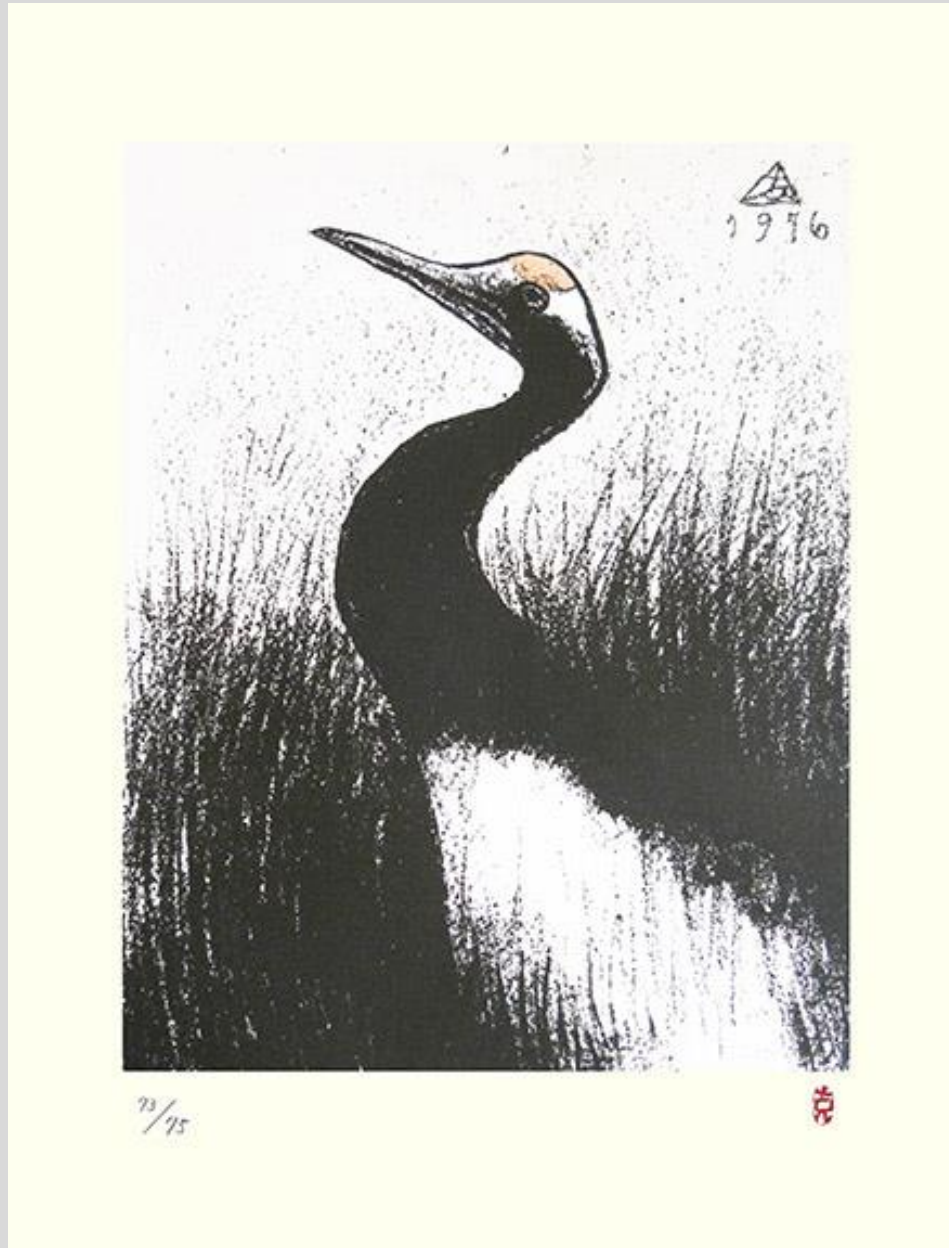
55 Japanese bush-warbler (*Cettia diphone*) by **Yoshihiro Shimoda**, 335 x 275 mm



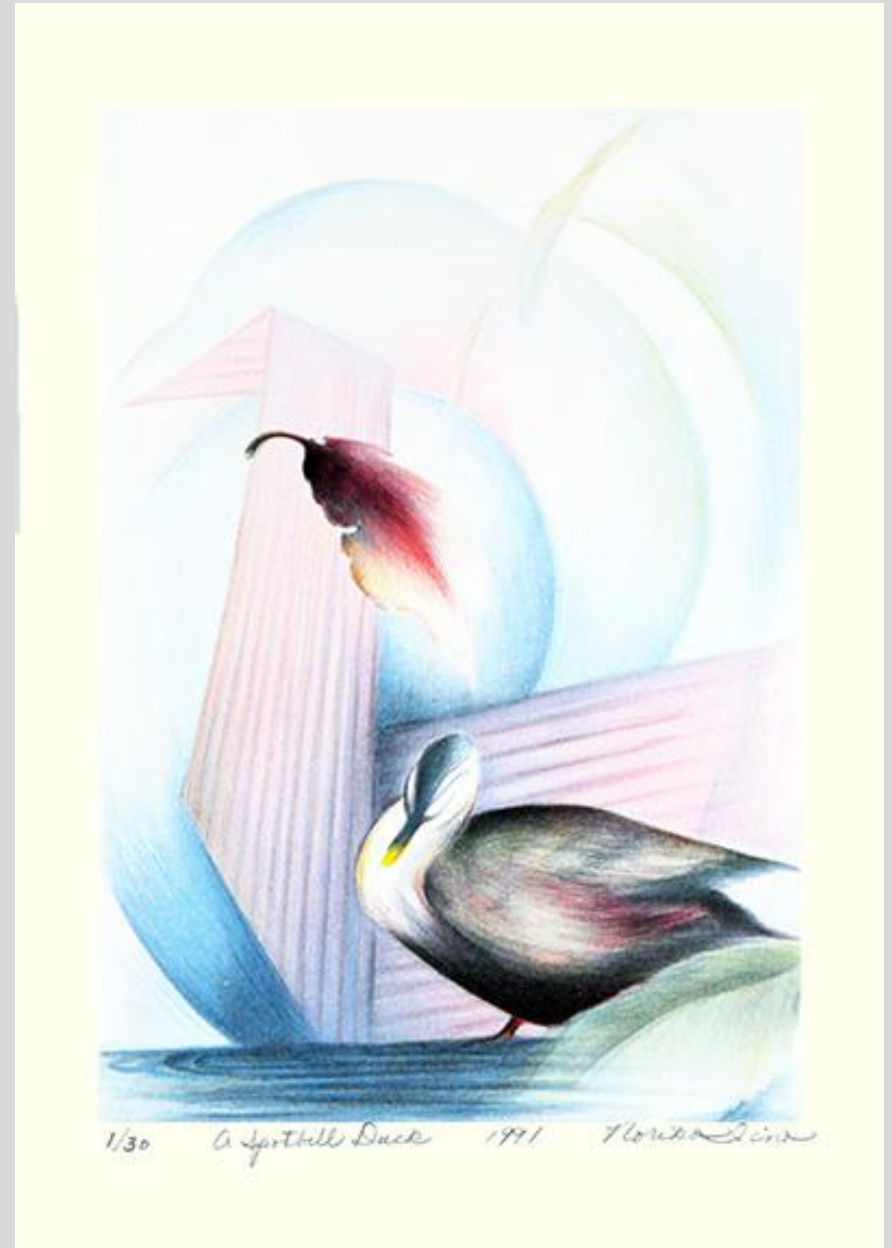
56 Snowy owl (*Bubo scandiacus*) by **Shigehiro Negishi**, entitled alone, 500 x 350 mm



57 Red-crowned crane (*Grus japonensis*) by **Yoshi Kinouchi**, 505 x 660 mm



58 Spot-billed duck (*Anas poecilorhyncha*) by **Noriko Iino**, entitled a spotbill duck, 345 x 480 mm



59 Rock dove (*Columba livia*) by **Einosuke Hiratani**,
450 x 590 mm



3/45

E. Hiratani

60 Rock dove (*Columba livia*) by **Gikō Hayakawa**, entitled
starry night, 255 x 305 mm



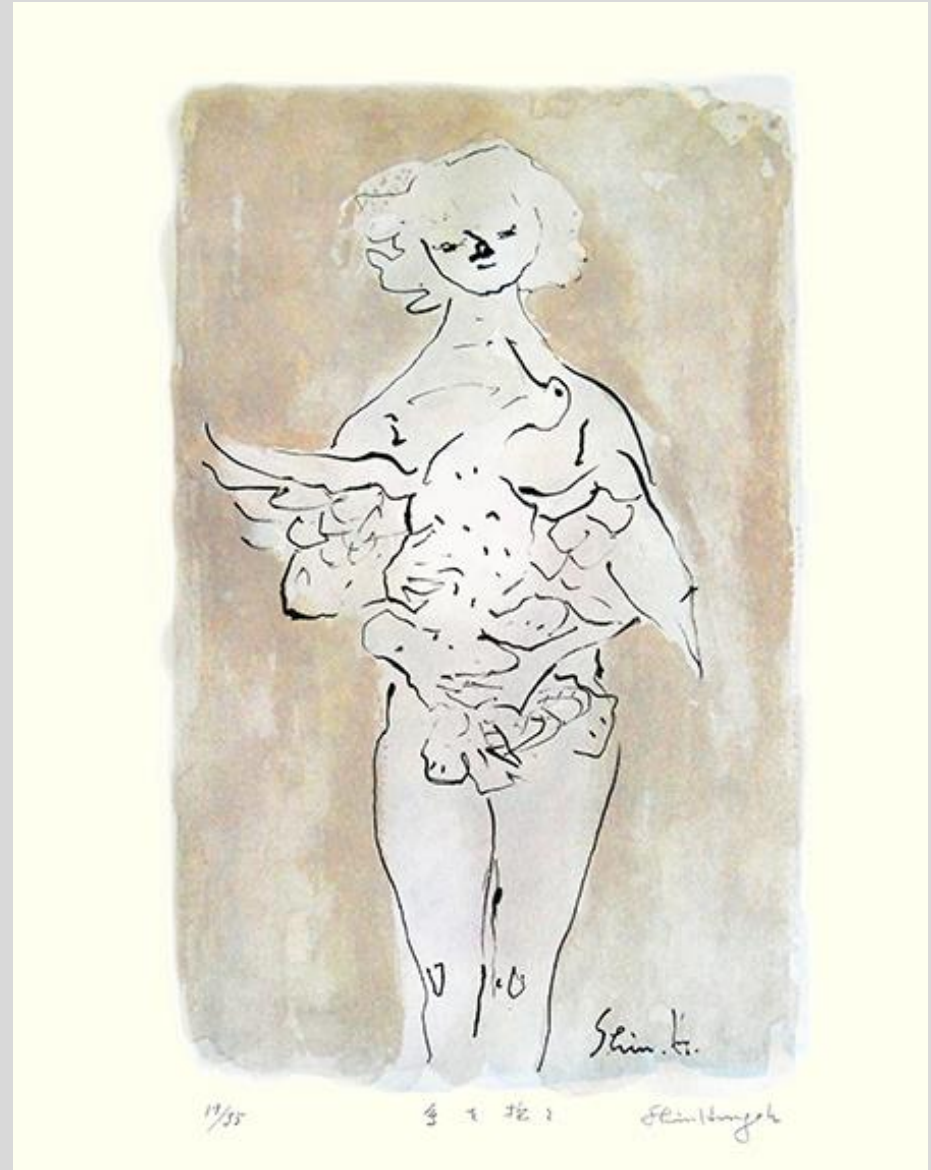
222/400

G. Hayakawa

61 Budgerigar (*Melopsittacus undulatus*) by **Sachyo Doi**, 350 x 475 mm



62 Domestic goose (*Anser cygnoides*) by **Shin Hongō**, entitled entertaining bird, 385 x 490 mm



63 Indian peafowl (*Pavo cristatus*) by **Motomi Tsunoda**, entitled Fuji birds – parenting, 210 x 295 mm



64 Rock dove (*Columba livia*) by **Teruo Ōnuma**, entitled bird II, 360 x 420 mm



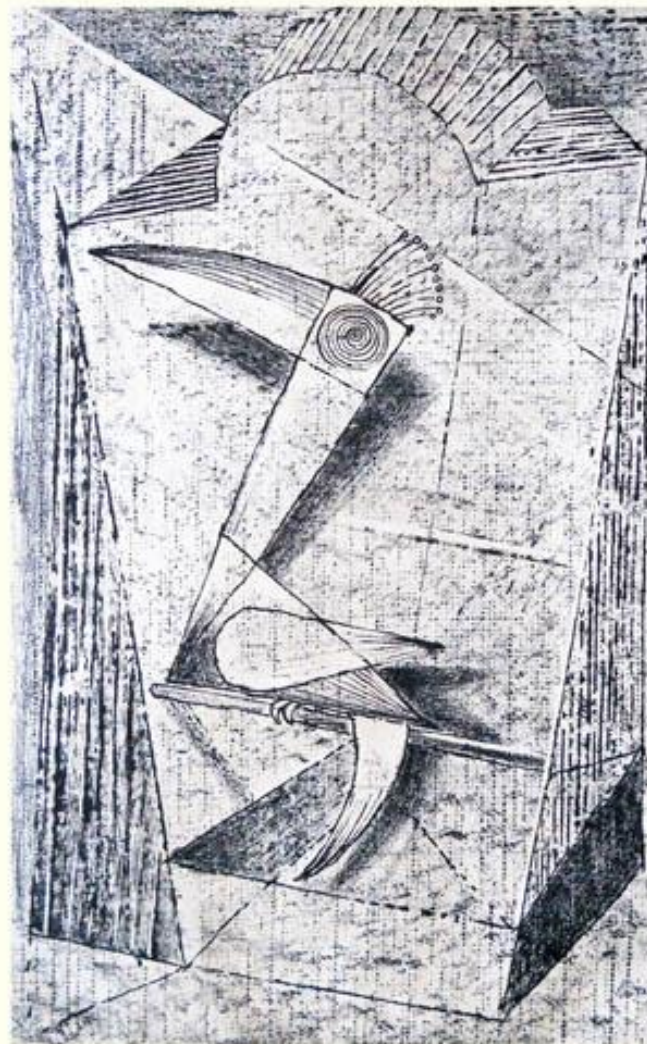
65 Ostrich (*Struthio camelis*) and penguin (*Spheniscus* sp.) by Yūji Umetsu, 320 x 375 mm



2/20

Yūji Umetsu

66 Unidentified bird by Yoshinobu Masuda, 385 x 565 mm



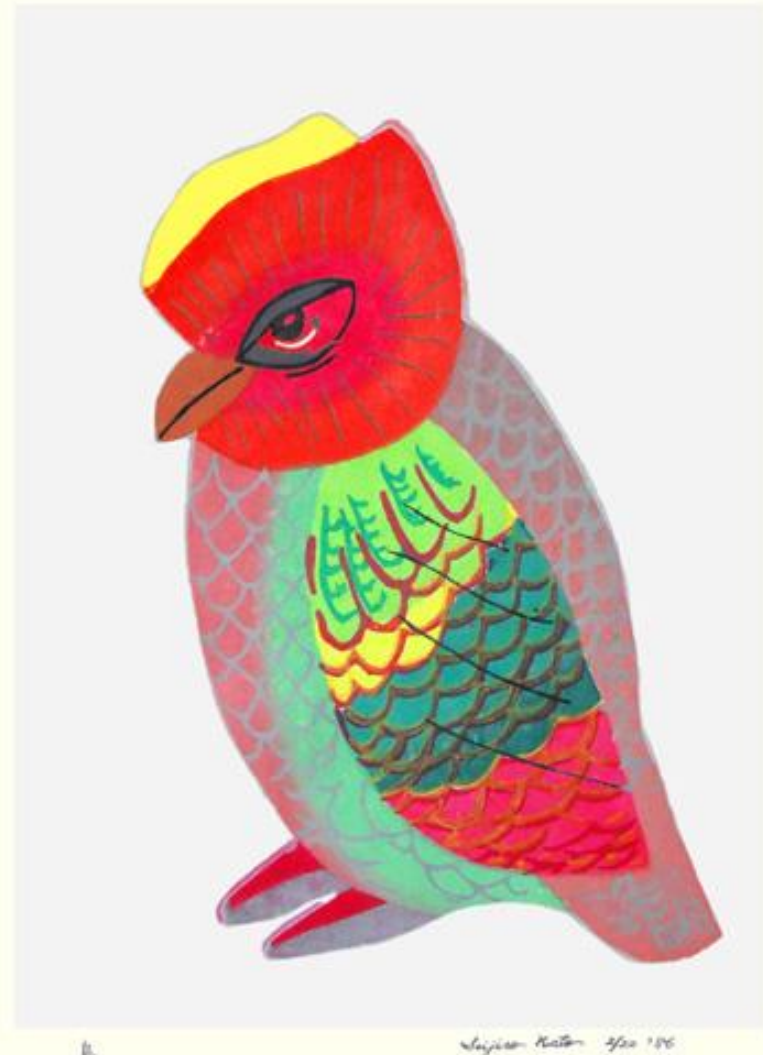
1/50

Yoshinobu Masuda

67 Unidentified bird by **Kiyoshi Awazu**, entitled blue bird, 280 x 415 mm



68 Unidentified bird by **Seijirō Katō**, entitled bird, 240 x 315 mm



69 Unidentified bird by **Makoto Sakurai**, 460 x 605 mm



70 Unidentified bird by **Setsuko N.**, 350 x 450 mm



37/50

setsuko.N.

71 Unidentified bird by **Kazu Wakita**, entitled bird and fruit, 485 x 380 mm



72 Unidentified bird by **Shūichi Ono**, entitled bird face, 650 x 500 mm



73 Dove (*Columba* sp.) by **Naomi Hashimoto**, entitled uccello, 200 x 200 mm



74 Unidentified bird by **Hiromi Kawabe**, entitled hopping 1, 385 x 300 mm



75 Unidentified bird by **Masanari Murai**, entitled bird, 570 x 760 mm



76 Owl (Family Strigidae) by **Hiroaki Yoshioka**, entitled owl A, 455 x 635 mm



77 Crane (*Grus* sp.) by **Shūji Wakō**, entitled folded crane (spool), 385 x 565 mm



78 Unidentified bird by **Tadashi Suguro**, 80 x 90 mm



79 Unidentified bird by **Yoshikane Mita**, entitled bird in the countryside, 500 x 350 mm



80 Unidentified bird by **Kōsuke Kimura**, entitled bird's voice, 200 x 130 mm



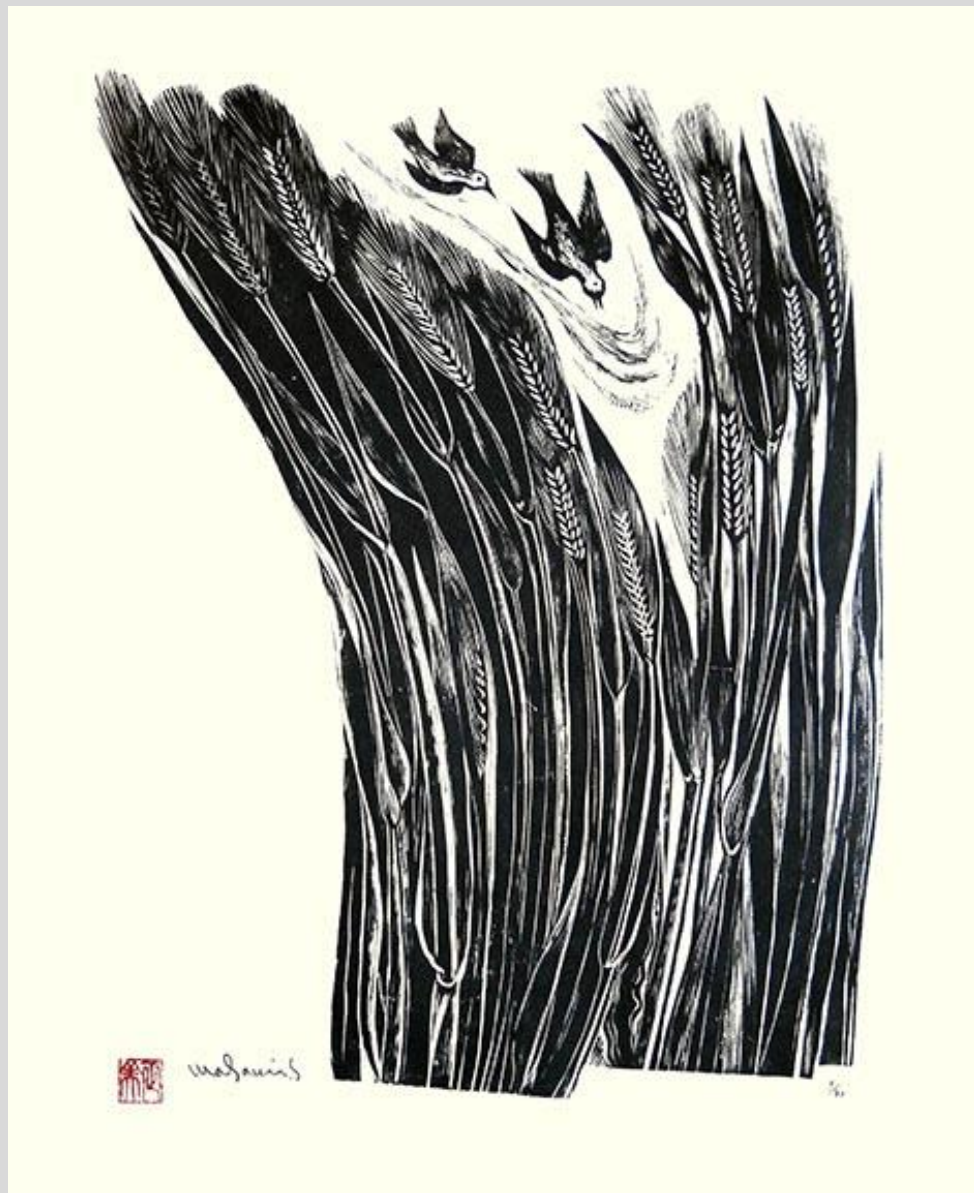
81 Unidentified bird by
Takeshi Takikawa, 610 x
455 mm



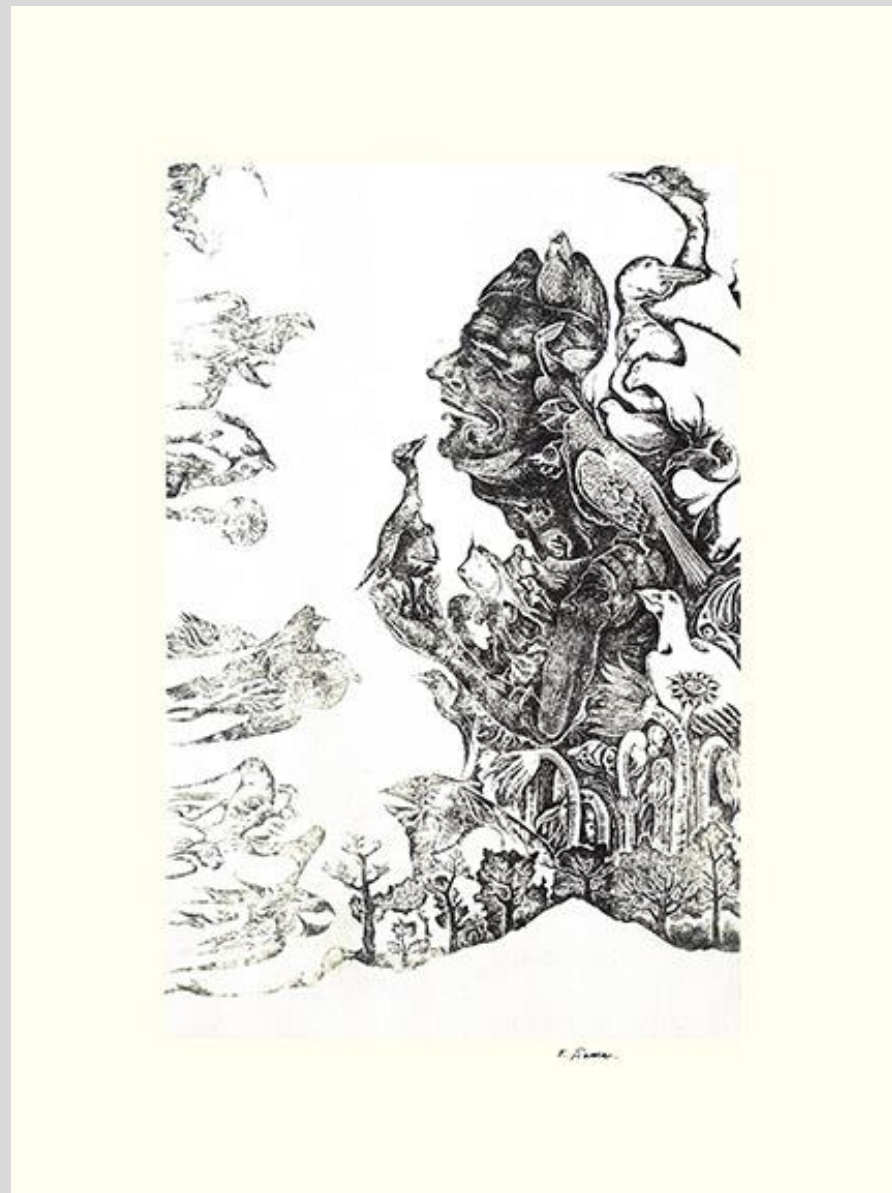
82 Unidentified bird by
Junko Ozaki, entitled
right tree – d, 360 x 315
mm



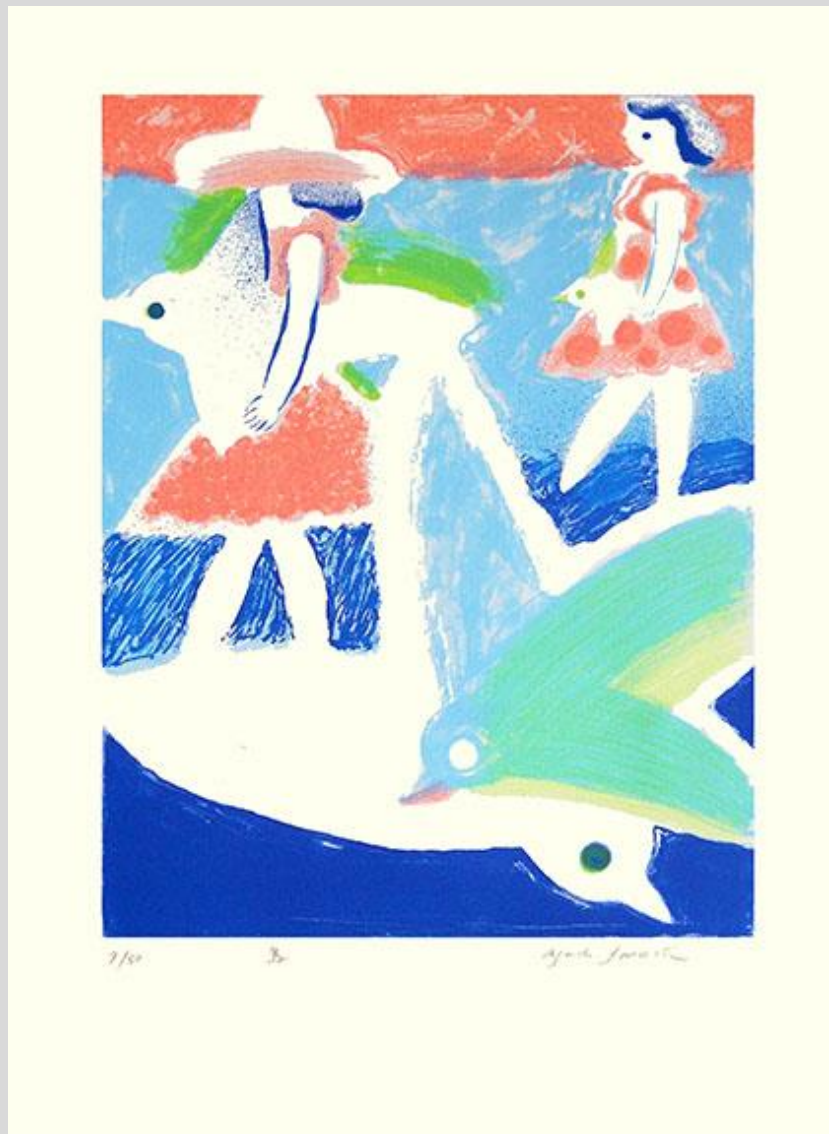
83 Unidentified bird by **Masami Sugiura**, 385 x 475 mm



84 Unidentified birds by **Takasumi Sema**, 310 x 410 mm



85 Unidentified bird by **Asako Sasaki**, entitled bird, 455 x 620 mm



86 Unidentified bird by **Keiji Fukuchi**, entitled bird, 350 x 500 mm



[Back to Exhibitions](#)